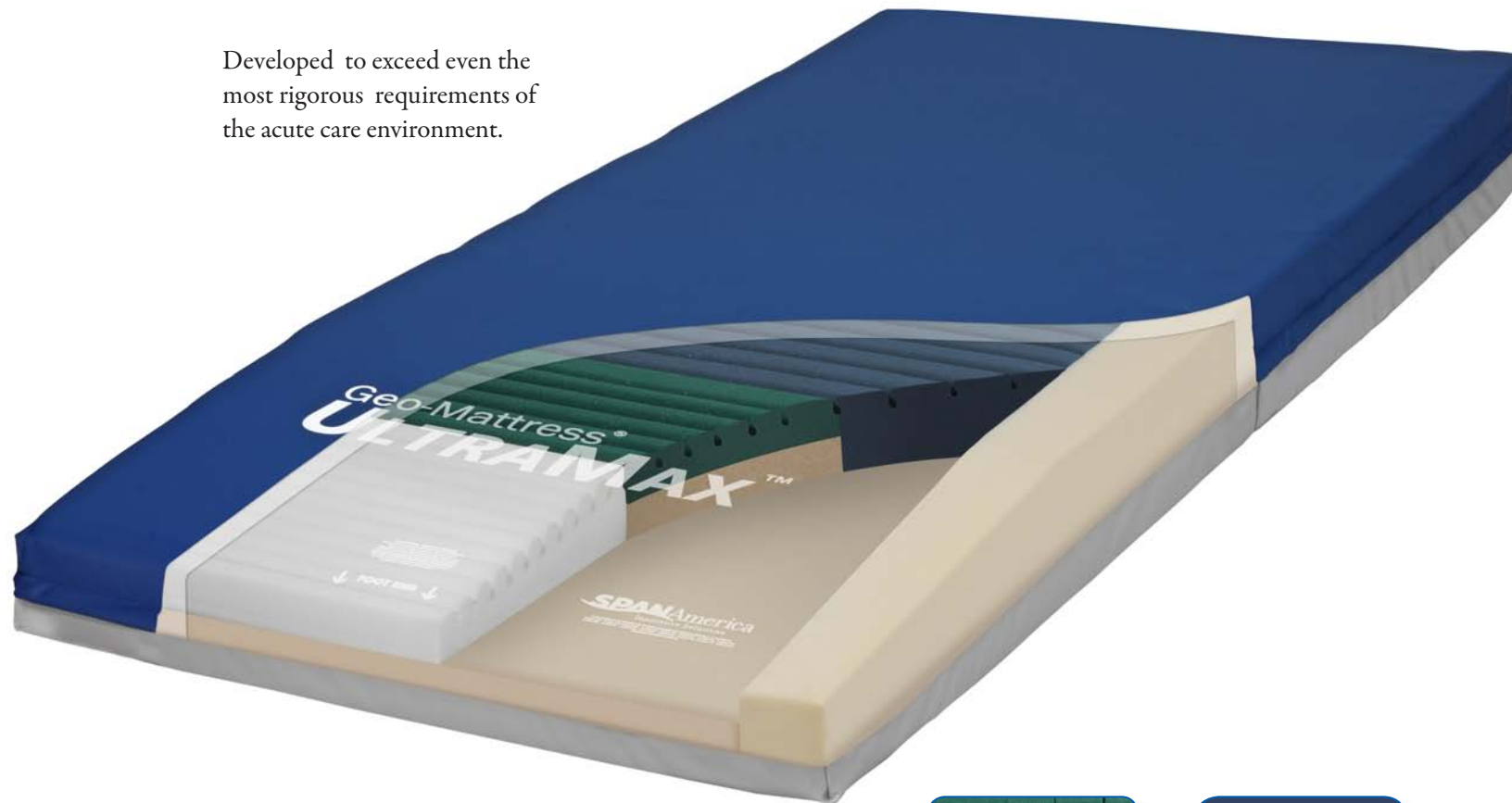


# Geo-Mattress<sup>®</sup> *UltraMax*<sup>™</sup>



Reactive pressure redistribution support surface

Developed to exceed even the most rigorous requirements of the acute care environment.



### **Ultra Resilient**

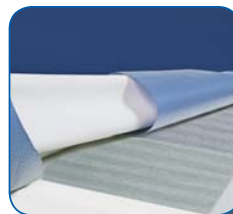
Exclusive UHP 500<sup>™</sup> torso section and 3-dimensional Zoning<sup>™</sup> design ensure support and durability not achievable with traditional HR, latex, or viscoelastic foams.

### **Ultra Comfortable**

Precision-engineered to facilitate the sustained, restful sleep that can be a critical contributor to healing and recovery.

### **Ultra Effective**

Geo-Matt<sup>®</sup> segmented surface and Shear Transfer Zone<sup>™</sup> design deliver unsurpassed protection against shearing, pressure, and heat/moisture buildup.



## **SPAN**America

better science. better care.

800-888-6752 [www.spanamerica.com](http://www.spanamerica.com)

©2011 Span-America Medical Systems, Inc.

# Geo-Mattress® UltraMax™

Firm perimeter provides edge-of-bed stability.  
Benefits: Fall prevention; safety during ingress, egress.



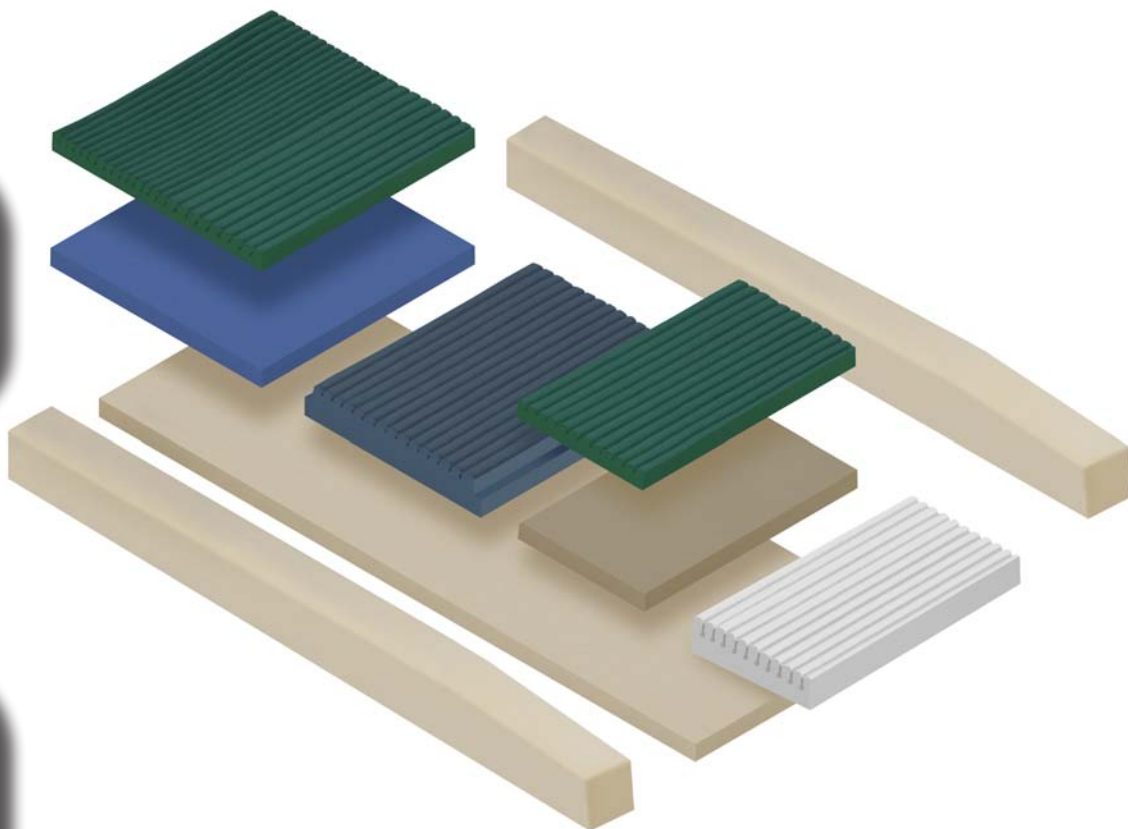
Segmented Geo-Matt® surface creates more than 800 individually articulating cells, ventilated by Ring-of-Air® channels.  
Benefits: Clinically-proven protection against shearing; dissipates heat and moisture build-up.



3-Dimensional Zoning™ core design provides anatomically-calibrated levels of support and immersion throughout surface.  
Benefits: Extreme comfort; optimized tissue load management; enhanced product longevity.

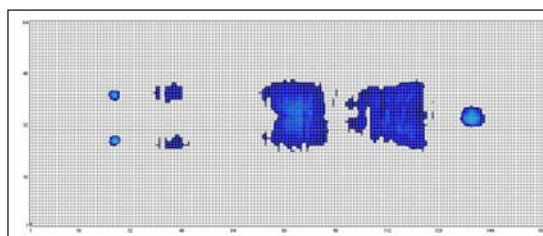


Two-way heel protection  
Segmented viscoelastic foam cradles the heel. Gentle Heel Slope™ redistributes pressure to more pressure-tolerant lower legs.  
Benefits: Enhanced skin integrity; comfort.

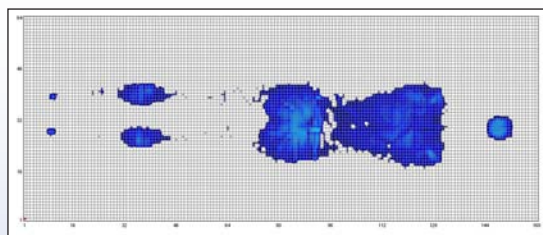


## Digital Pressure Imaging

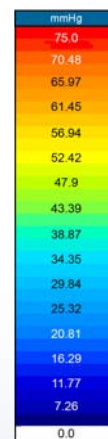
Computerized mapping confirms outstanding redistribution of pressure across the surface and low overall peak pressures, whether positioned flat or with Head of Bed elevated.



Subject cited: Female, 4'11 105 lbs



Subject cited: Male, 5'11 165 lbs.



NOTE: Pressure mapping results are representative only. Results will vary depending on a variety of factors including subject's position in bed, weight, body type, and position of frame.

Span-America exclusive:

## UHP 500™

### Ultra High Performance Foam

Specially formulated for the *UltraMax*, the unique cellular structure of UHP 500 gives it a combination of properties not achievable with any of the foams commonly used in medical support surfaces.

**Durability and Support:** The seat section of a typical support surface is exposed to the highest level of mechanical fatigue due to repeated gatching, compounded by the concentration of patient weight, especially with the head of the bed (HOB) elevated. To address this, the entire seat section of the *UltraMax* is built from UHP 500, which provides:

- A 55% higher Support Factor than typical medical-grade foams
- Unmatched protection from “bottoming out”, even with HOB elevated
- Superior resiliency and recovery, even when compared to typical HR foams



**Starts better, Stays better.** Ten-year accelerated life cycle testing confirms the excellent performance over time made possible by UHP 500.

**Consumer-like Comfort:** UHP 500 is engineered to mimic the luxurious feel and longevity of natural latex, the foam used in top-of-the-line consumer bedding products.

- 100% Latex-free, 100% PBDE-free
- Won't trap heat or induce shearing like flat viscoelastic foams

Span-America exclusive:

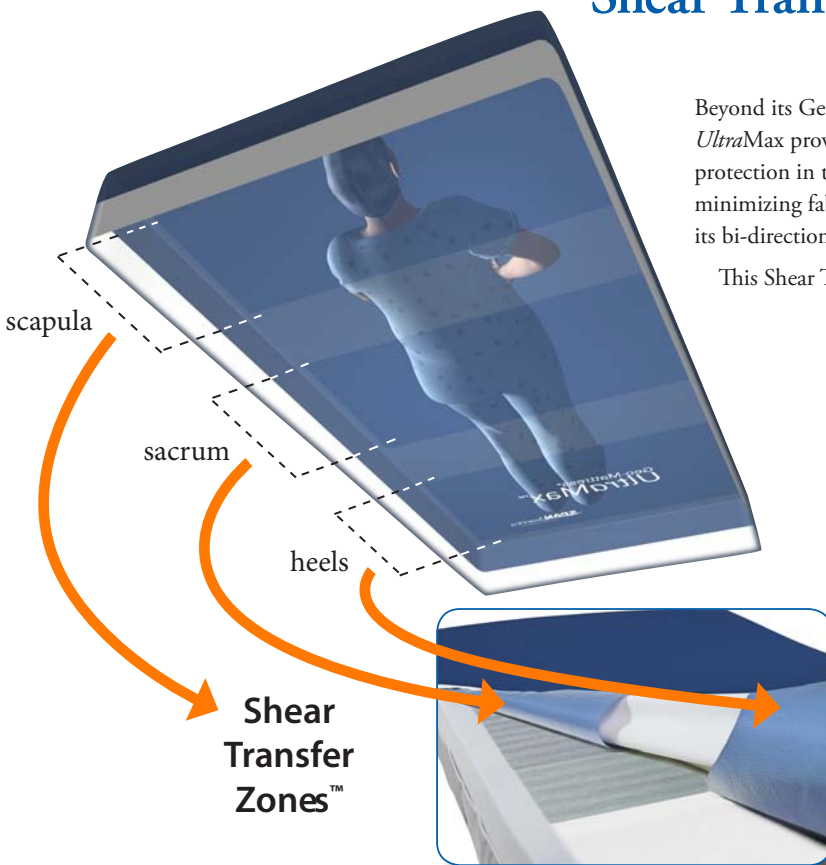
## Shear Transfer Zone™ design

(pat. pending)

Beyond its Geo-Matt® segmented top surface, the *UltraMax* provides an additional measure of shearing protection in the form of the silicone-coated, shear-minimizing fabric bands located on the underside of its bi-directional stretch cover.

This Shear Transfer Zone design helps:

- Prevent heels, sacrum, and scapula from “digging into” surface
- “Glide” user back to original position following HOB elevation
- Protect against damaging effects of micro shear, macro shear, and rotational (pivot-induced) shear
- Provide patient stability by transferring shear to more shear-tolerant anchor points



**3-sided, flapped zipper**  
*Benefits:* Infection control; ease of cleaning; ease of replacement



**Two reinforced handles**  
*Benefits:* ease of transport; longevity



**Inner fire barrier**  
*Benefits:* Safety; regulatory compliance

# Geo-Mattress<sup>®</sup>

## UltraMax<sup>™</sup>

### Specifications

- **Weight Limit:** 500 lbs. (36"); 600 lbs. (39" and 42")
- **Warranty:** 8-year, all components. Non-prorated
- **Mattress Weight:** 24 lbs.

All components are 100% latex-free  
All foams are 100% PBDE-free

#### Bi-directional Stretch Cover:

- Fluid-resistant
- Anti-microbial
- Tear-resistant
- Wipes clean with standard hospital-grade cleaners
- Two reinforced carry handles on one side
- Split non-skid bottom: helps reduce "gatching noise"

#### Indications for Use:

Recommended for prevention and treatment of Stage I and Stage II pressure ulcers.<sup>1</sup>

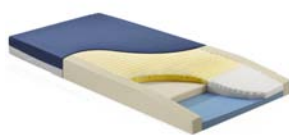
Item #	Dimensions
UMX8036-29	80"L x 36"W x 6"H
UMX8436-29	84"L x 36"W x 6"H
UMX7536-29	75"L x 36"W x 6"H
UMX80CA-29	80"L for CareAssist <sup>®*</sup>
UMX84CA-29	84"L for CareAssist <sup>®*</sup>
UMX85V-29	For recessed deck frames
UMX8039-29	80"L x 39"W x 6"H
UMX8042-29	80"L x 42"W x 6"H
UMX8439-29	84"L x 39"W x 6"H
UMX8442-29	84"L x 42"W x 6"H

Versions also available for most common stretcher models.

**Flammability:** Conforms to NFPA 101 (Life Safety Code<sup>™</sup>); CPSC 16 CFR Parts 1632 and 1633; Cal TB 117 & 129.

<sup>1</sup> May also be appropriate for multiple Stage II or Single Stage III ulcers, based on full assessment of skin status and repositioning required, according to best clinical practice and judgement.

*Part of a complete line of active and reactive specialty surfaces for tissue load management.*



**Geo-Mattress<sup>®</sup>**  
therapeutic foam series



**PressureGuard<sup>®</sup>**  
air therapy series



**PressureGuard Custom Care<sup>®</sup>**  
Non-powered & convertible series



**Bariatric Solutions**

\*Hill-Rom is a mark, and CareAssist<sup>®</sup> is a registered mark, of Hill-Rom<sup>®</sup> Services, Inc.

**SPAN**America  
better science. better care.