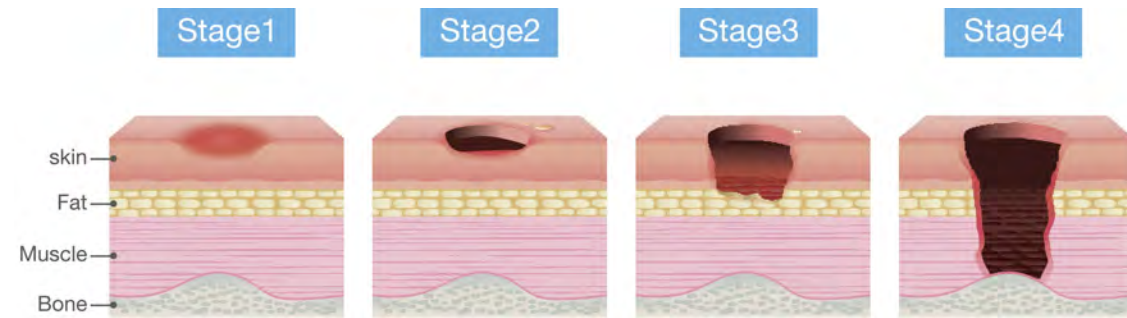


SALUTE RDX

The **Salute RDX** mattress system provides alternating pressure therapy with micro low air loss to aid patients who are at risk of developing pressure ulcers or have existing stage 1, 2, 3, or 4 ulcers. Caregiver friendly, the Salute RDX is an affordable, therapeutic surface solution for any clinical care setting.



Optional Raised Bolster Cover available for added patient safety. Bolster cover has center access providing easy ingress and egress.

MASTER CONTROL UNIT	
Dimension:	(L)13.5"x (W)7.3"x (H)8.3"
Weight:	7.1 lbs
Rating Voltage:	110-120 volts
Max Current:	0.2A max.
Rating Frequency:	60Hz
Cycle Time:	5, 10, 15, 20 mins Static function 3 in 1 alternation
Min/Max Pressure:	12~47 mmHg +/- 6 mmHg
Air flow rate:	> 6 l/min
Protection Type:	Class I, Type BF
Low Pressure Alarm:	Visual / Audio
Power Failure Alarm:	Visual / Audio Maintenance service LED indicator

MATTRESS REPLACEMENT	
Model No:	Salute RDX
Dimensions:	(L)80"x (W)36"x (H)8"
Weight:	25.3 lbs
Weight Capacity:	500 lbs
Cell Material:	Black Nylon with PU coating Cell in cell design to stay inflated during power outage
Cell Number:	18 cells
Cover Material:	Blue Nylon with PU coating finish
Base Material:	Black Polyester with PVC coating CPR Quick Release System Cable Management System on bottom cover
HCPSC Code	E0277

PRIUS HEALTHCARE USA
Creating innovation and difference

T (813) 854-5464
E info@priushc.com
W priushcusa.com

160 SCARLET BLVD
OLDSMAR, FL 34677

SALUTE RDX

Provides you, the caregiver, with peace of mind, and your patient with world class care and comfort



HAPPYHEEL™ Heel Relief
Patent Pending

PRIUS HEALTHCARE USA
Creating innovation and difference

priushcusa.com

Perfect for patients and caregivers



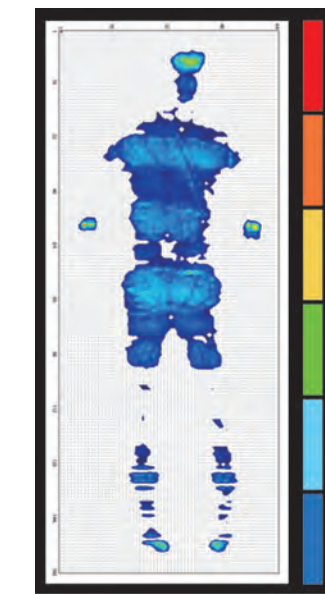
Nylon covered bottom cover for friction and noise reduction when raising bed's head pan



Effective micro low air loss for moisture management



Slimline pump design is unobstructive



PRESSURE MAPPING

Salute RDX provides constant low pressure by redistributing the patient's pressure over a greater area than a standard mattress.

SALUTE RDX



- Interchangeable air cell design provides easy cleaning and minimizes the proliferation of bacteria
- The Salute RDX employs 8" air bladders with cell in cell design (4.5" of therapy, 3.5" of static air), to provide therapeutic alternating pressure and also allow the mattress to stay inflated in a power outage.
- The Salute RDX replacement mattress can accommodate patient weights up to 500 lbs

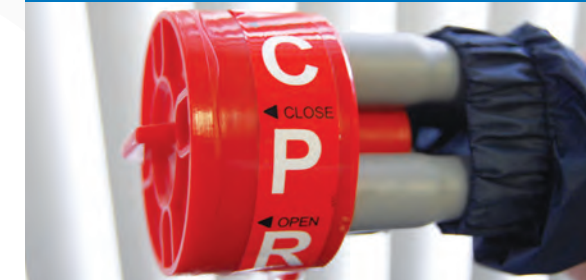


- **HAPPYHEEL™** provides extra softness in the last 5 air cells to provide protection for patient's fragile heels
- Modular design ensures ease of use and cleaning

Salute RDX is your partner in prevention and treatment of pressure ulcers



Cable management system keeps electrical cables off floor for caregiver and patient safety



CPR quick release system deflates the system within 20 seconds

8 adjustable comfort settings provide different levels of comfort depending on the patient's therapy requirement.

3-in-1 alternating pressure covers 66% of patient's body (vs. 50% on 2 in 1 systems) to provide a more comfortable yet still effective therapy

The Power Failure alarm warns in case of power outage.

Service LED indicator is a friendly reminder for advising caregiver to send back control unit to certified technician for annual inspection.



provides further therapy and comfort by decreasing pressure in patient's heel area.



Spring loaded hooks snap to fit your bed's footboard

